



# FIRST RESPONDER SCENARIOS

To prepare them to respond effectively while adhering to departmental protocol, InVeris Training Solutions has designed a comprehensive set of video courseware.

These immersive, real-world simulations train law enforcement personnel to react decisively when the unexpected inevitably occurs.

## ACTIVE SHOOTER, HIGH SCHOOL

As you enter the school, gunshots and screams are heard coming from around the corner. With little time to think and assess the situation, the trainee has to rely on survival skills and split second decision making to neutralize a volatile situation. This is a fast developing, dynamic scenario that is designed to test a trainee's ability to react to an instantaneous, life threatening encounter.

## ACTIVE SHOOTER, COLLEGE

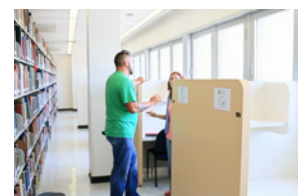
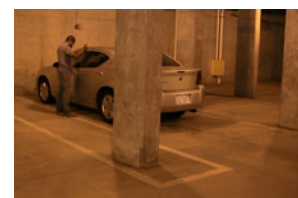
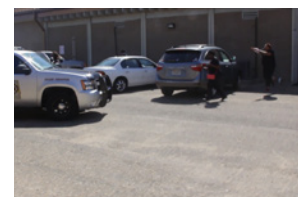
As you arrive on scene, you hear shouting coming from the building. Upon entering, you find multiple casualties and survivors screaming and showing signs of shock while caring for the wounded. You continue to search the premises until you hear shots from a classroom in the rear of the building where you prepare to make entry. This scenario is designed to test a trainee's ability to make sound judgments with regards to an active shooter with an unknown number of hostages

## PARKING DECK

While performing a routine patrol, you find a man attempting to unlock a car door via a slim jim. After identifying yourself, you have to think quickly to decide if the potential suspect is in fact committing a felony break in or is the actual owner of the vehicle. This scenario is designed to test the trainee's ability to mentally navigate a complex situation and respond accordingly.

## SUSPICIOUS PERSON

Arriving at a library on a call of a suspicious person, you find you and your partner have entered a very dangerous and dynamic situation that could easily escalate and result in civilian and law enforcement casualties. This scenario is designed to test a trainee's ability to de-escalate a volatile situation and save a hostage.



## EMOTIONALLY DISTURBED PERSON (EDP) IN A LIBRARY

You respond to a call of an EDP in a campus library. Upon arrival you find the individual confused and rambling. You follow the suspect to a small room where you are faced with the critical decision of whether to use lethal, non-lethal, or force the suspect to comply. This video scenario is designed to test the patience and ability of the trainee to communicate with an EDP, receive compliance, and leave the library escorted.

## DOMESTIC DISPUTE

You respond to a call of a domestic dispute at a college dormitory. Upon entering the room, you find two females fighting. After breaking them up, you must interview and determine if an assault has been committed and prevent the situation from escalating. This scenario will test the trainee's ability to intervene in a domestic situation and promote a peaceful outcome while exhibiting patience.

## DOMESTIC VIOLENCE

You respond to a report of domestic violence in a college dormitory. Upon entering you encounter a very dangerous situation that will require immediate action. This scenario will test a trainee's ability to encounter an active assault and decide whether to use lethal or non-lethal force while protecting the victim.

## CLASSROOM SHOOTER

You respond to a call of an active shooter at a private school. Upon arrival you find casualties and panicked survivors fleeing the building. Entry and focus are paramount in this kinetic situation with a twist to test the officer's ability to observe details under stress.

## VENGEFUL MOTHER

You have been dispatched to a school where a distraught mother of a bullied child is taking revenge. This situation develops quickly with the life of a child in the hands of the officer in a quick-paced hostage situation.

## WORKPLACE VIOLENCE

You are asked to assist a human resources manager escort a dismissed employee off the premises and only minutes later are thrust into a dangerous situation. With multiple wounded and an employee at gunpoint, the officer must act quickly to control the situation and prevent a third casualty.

## HALLWAY SHOOTER

You respond to reports of an active shooter in a school. You arrive to find the occupants fleeing the premises and multiple casualties. Upon entering the interior of the school, you observe a suspect in the hallway. After engaging you, he flees through doors at the end of the hall and the chase begins. This scenario will test an officer's accuracy in a full forward movement and culminate in a one-on-one confrontation in a classroom.

## BACKUP OFFICER – (BLACK OR WHITE SUSPECT)

You respond to a call of an officer who needs help. Upon arrival you observe the suspect wrestling with the officer. The situation worsens, and you are in foot pursuit with the suspect. You turn down an alley and are forced to react with quick decisions. The officer searches through multiple levels to identify all threats. This scenario will test the officer's reactionary abilities under high stress in a dynamic environment.

## VEHICLE STOP – (BLACK, HISPANIC OR WHITE SUSPECT)

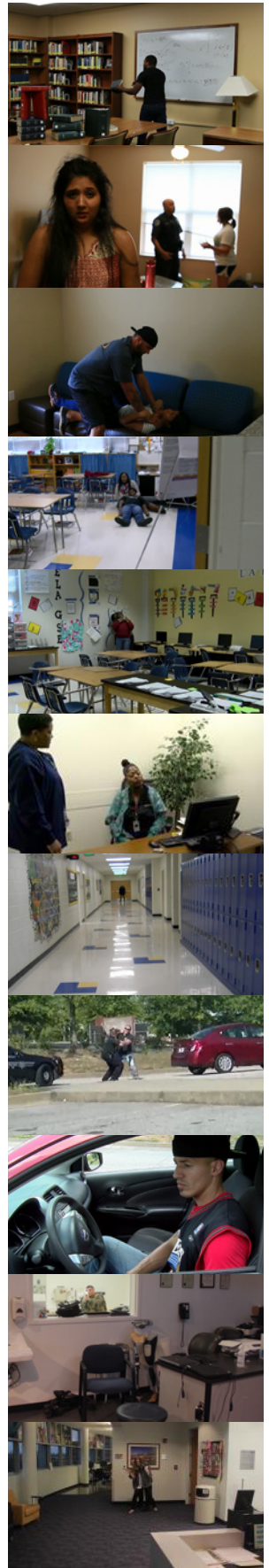
You make a routine traffic stop where the officer is forced to make a quick decision as the suspect reaches for an item. This scenario will test the officer's reaction abilities under high stress in a dynamic environment.

## TERROR ATTACK HOSPITAL

You are dispatched to reports of an explosion and shots fired at a VA hospital. Upon arrival, you observe smoke, casualties and immediately engage multiple shooters. The officer searches through multiple levels to identify all threats. This scenario will test the officer's reactionary abilities under high stress in a dynamic terroristic environment.

## DISGRUNTLED BOYFRIEND – HOSTAGE

You are dispatched to reports of a hostage situation at a hospital. Upon arrival, you learn there is a domestic disturbance that is rapidly evolving into a hostage situation. This scenario will test the ability of the officer to effectively use commands while maintaining control and determining escalation of force.



ITS-LEVirtualSales@inveristraining.com | 1.800.813.9046

296 Brogdon Road | Suwanee, GA 30024 USA

**inveristraining.com**